



Description

1. live-loaded, self-adjusting primary and secondary sealing.
2. The balls are precision machined and mirror finished for bubble-tight shut off and less operating torque.
3. As an added safety feature, a hole in the stem slot of each ball equalizes pressure between the body cavity and the line media flow.
4. The bodies are investment cast and all valve size castings are solution annealed/normalized for the highest quality and added strength.
5. The seat design ensures bi-directional, bubble-tight sealing with low operating torque.

Selection of possible applications

Soap, Irrigation, Effluent, Light Oils, Solids Handling, Agriculture, Filtration, Light Slurries, Sump Drain Off, Air Pollution, Fine Chemicals, Low Pressure Safety Injection, Synthetic Fuels, Aromatics, Fuel, Low Shear Services, Tank Farm Transfer, CO₂ Injection, General Processing Industry, Metal and Steel Industry, Toxic Services, Car Wash, General Purpose, Mineral Processing, Utility, Chemical Processing, Greases and Fats, Mining, Valuable Liquids, Commercial, Heat Exchangers, Municipal, Waste Processing, Condensate, etc.

Selection of possible flow media

Steam, air, water, oil, other fluid, etc.

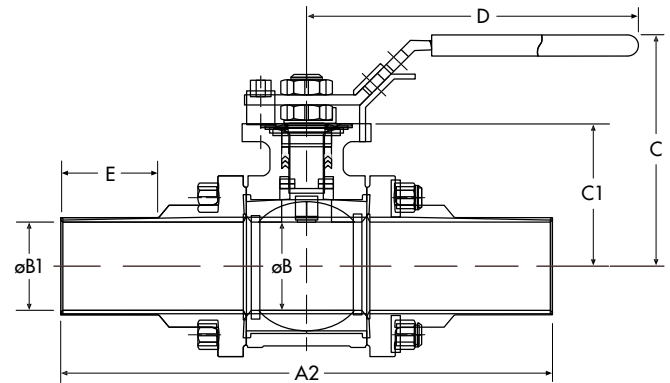
MODEL BR-TPS

Dimensions and Weights

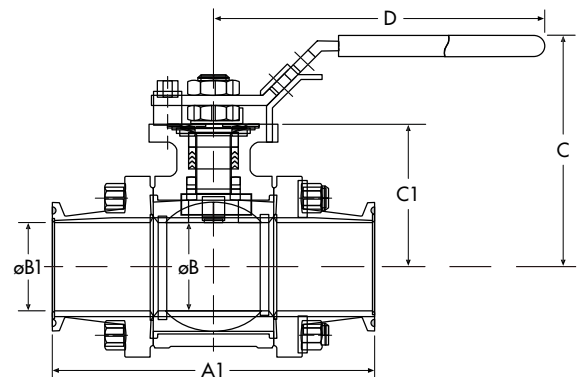
Size ins mm	A1	A2	ø B Port	ø B1	C	C1	D	E	C v	WEIGHT lbs./ kg.	BOLT TORQUE lbs-ins/ Nm	BREAK TORQUE lbs-ins/ Nm	
												w/ Cavity Filler	w/ Cavity Filler
1/2 15	3.602 91.5	6.00 152.4	0.370 9.4	0.370 9.4	2.60 66	1.535 39	6.496 165	1.50 38.1	9.5	2 0.9	150 17	42 4.8	55 6.2
3/4 20	4.114 104.5	6.00 152.4	0.620 15.8	0.620 15.8	2.60 66	1.535 39	6.496 165	1.50 38.1	30	3 1.4	150 17	70 7.9	90 10.2
1 25	4.480 113.8	6.50 165.1	0.870 22.1	0.870 22.1	2.91 73.9	1.658 42	6.496 165	1.50 38.1	65	4 1.8	150 17	115 13	150 17
1 1/2 40	5.055 128.4	7.50 190.5	1.370 34.3	1.370 34.3	3.62 91.9	2.254 57.3	7.874 200	1.50 38.1	205	7 3.2	280 32	285 33	370 42
2 50	5.748 146	8.50 215.9	1.870 47.5	1.870 47.5	4.53 115.1	2.953 75	9.842 250	1.50 38.1	420	10 4.5	285 32.2	465 53	605 69
2 1/2 65	6.850 174	10.0 254	2.370 60.2	2.370 60.2	5.04 128	3.386 86	9.646 245	1.50 38.1	430	20 9.1	330 37	650 74	845 96
3 80	7.402 188	11.5 292.1	2.870 72.9	2.870 72.9	6.42 163.1	3.720 94.5	15.354 390	1.75 44.4	675	32 14.5	600 68	950 108	1235 140
4 100	8.758 222.5	12.5 317.5	3.834 97.4	3.834 97.4	7.09 180.1	4.350 110.5	15.354 390	2.00 50.8	1110	55 24.9	650 73	3000 339	3900 441

SECURE MOUNT

Size ins mm	H	J	K	L	M	ø P	U UNC
1/2 15	1.169 29.7	1.169 29.7	0.35 8.9	0.61 15.5	0.250 6.35	0.375 9.5	#10-24
3/4 20	1.169 29.7	1.169 29.7	0.35 8.9	0.61 15.5	0.250 6.35	0.375 9.5	#10-24
1 25	1.169 29.7	1.169 29.7	0.40 10.2	0.61 15.5	0.250 6.35	0.375 9.5	#10-24
1 1/2 40	1.392 35.4	1.392 35.4	0.51 13	0.80 20.3	0.315 8	0.438 11.1	1/4"-20
2 50	1.949 49.5	1.949 49.5	0.62 15.8	0.94 23.9	0.374 9.5	0.625 15.9	5/16"-18
2 1/2 65	2.840 72.1	2.840 72.1	0.82 20.8	1.22 31	0.472 12	0.750 19.1	5/16"-18
3 80	3.543 90	1.874 47.6	1.752 44.5	3.00 76.2	0.669 17	1.102 28	1/2"-13
4 100	3.543 90	1.874 47.6	1.752 44.5	3.00 76.2	0.669 17	1.102 28	1/2"-13

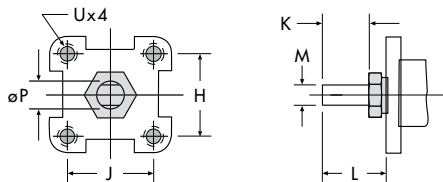


Extended Tube End Connections
Model TPS-77

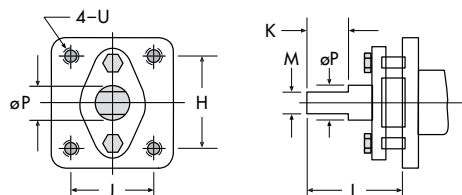


Quick Clamp End Connections
Model TPS-75

1/2" - 2" Valves

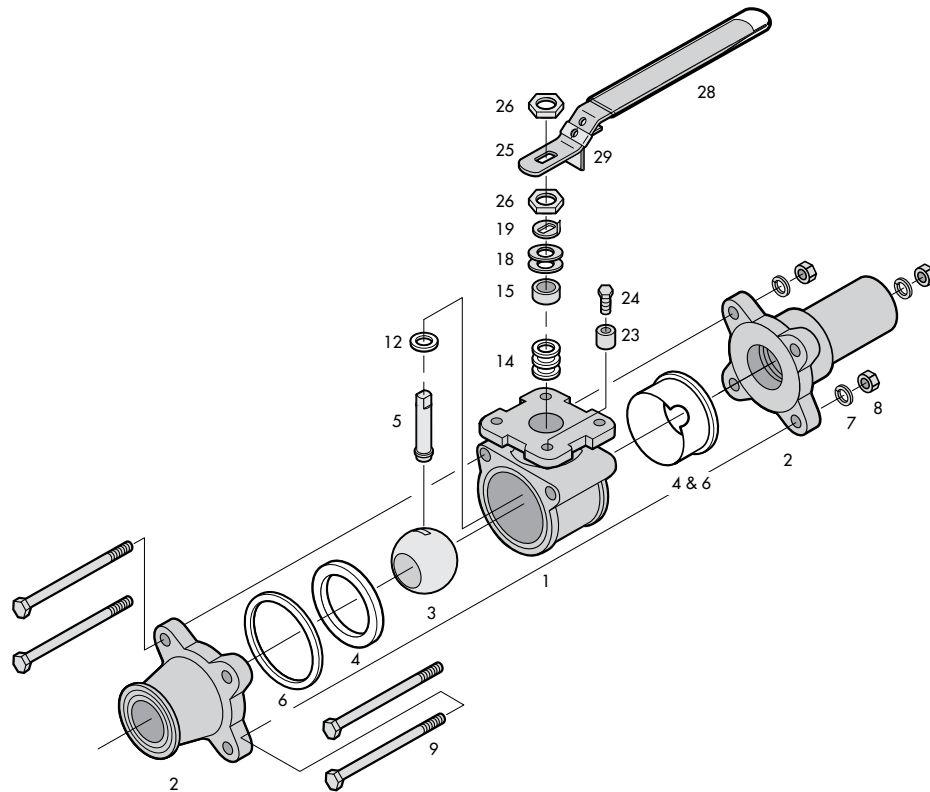


2-1/2" - 4" Valves



MODEL BR-TPS

Components & Materials



Item	Name	Material	Qty.
1	Body	ASTM A351 Gr CF3M	1
2	End Cap	ASTM A351 Gr CF3M	2
3	Ball	ASTM A351 Gr CF3M	1
4 & 6	Seat/Cavity Filler & Body Seal	PTFE	2
5	Stem	ASTM A479 Type316	1
7	Spring Washer	SS304	4
8	Body Nut	SS304	4
9	Body Bolt	SS304	4
12	Thrust Washer	PTFE	1
14	Stem Packing	PTFE	3
15	Packing Gland	SS304	1
18	Belleville Washer	SS301	2
19	Tab Lock Washer	SS304	1
23	Travel Stop Set Sleeve	SS304	1
24	Travel Stop Bolt	SS304	1
25	Handle	SS304	1
26	Lock Nut	SS304	2
28	Handle Sleeve	Vinyl	1
29	Locking Device	SS304	1

Size and connections

Quick clamp
Extended tube end
SAE male

